

THE BIOLOGY DEPARTMENT & YOU



Student associations

PGSS (post-graduate student society)
Thomson House



BGSA (Biology graduate student association)
Me

**ALL GRADUATE
STUDENTS**

GPS (graduate and post-doctoral studies)



GTC (biology graduate training committee)

University associations



YOU



THE BIOLOGY GRADUATE STUDENT ASSOCIATION

- Made up of all of you (MSc, PhD, Post Doc)

Execs

President
VP
Finance officer
Secretary

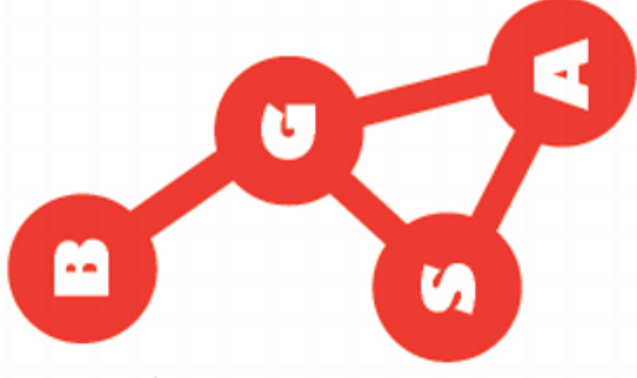
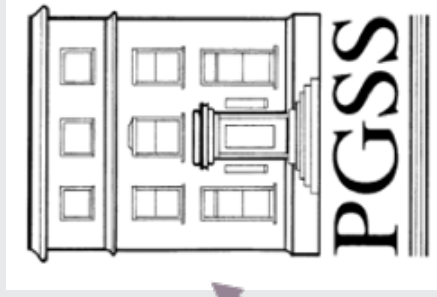
Councillors

16 GSA members
10 first year reps
6 R. Sep 2/11

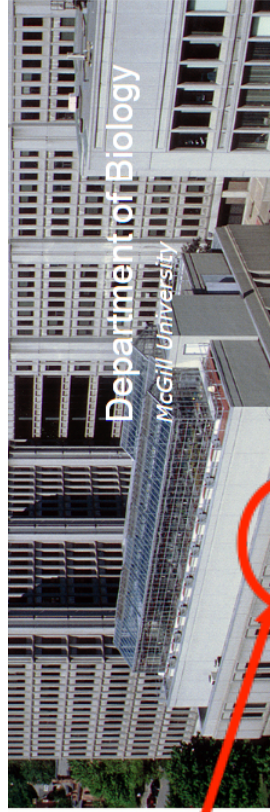
Representatives

PGSS
AGSEM (TA union),
seminar series
etc

WHERE WE GET OUR MONEY TO DO THINGS



BEING A GRAD STUDENT



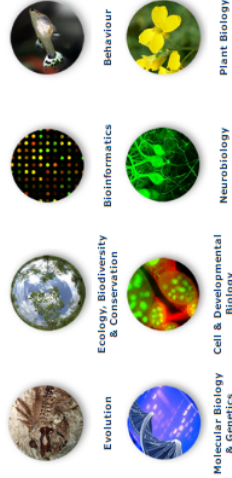
Home · Our Department · **Graduate Studies** · Undergraduate Studies · Our Faculty · Seminars

Welcome to the Department of Biology

Biology is the study of life. Its scope extends from molecules to organisms and ecosystems. It deals with fundamental questions such as the origin and evolution of plants and animals, interactions between living organisms and their environment, mechanisms of embryonic development, the structure and function of the living cell, the molecular basis of inheritance, the biochemical and genetic basis of human diseases, and the operation of the brain and the nervous system. Staff of the Biology Department conduct research and offer teaching programs in all these areas. The Department of Biology has equipped teaching and research laboratories located in the Stewart Biology Building and the Bellini Life Sciences Building.

English / Français

Areas of Research



Stewart Biology Building
1205 Docteur Penfield
Montreal, Quebec, Canada H3A 1B1
Tel.: (514) 398-5600
Fac.: (514) 398-5008

Bellini Life Sciences Complex
3646 St. William Oster
Montreal, Quebec, Canada H3G 0B1
[Our location on Campus]

- Courses
- Research Centres & Field Stations
- Biology Services & Facilities
- Biology Health & Safety
- Faculty Positions
- Course Lecturer Positions
- Teaching Assistant Positions
- Work opportunities for students

What's New?

- Biodiversity, Ecosystem Services and Sustainability Program
>>> view details
- Biology Weekly (Sept. 1, 2016)

BEING A GRAD STUDENT

Graduate Studies - Department of Biology

GENERAL INFORMATION - Research Areas, Programs & Research Facilities



Research Areas
The Department offers graduate training in many areas of biology with particular strengths in Ecology, Biodiversity, Evolution, Systematics, Plant Biology and Botany, Cell and Developmental Biology, and Neurobiology. Plant Biology and Biomimetics. The research areas of individual staff are detailed in the academic faculty section.

Graduate programs leading to the M.Sc. and Ph.D. degrees are offered. The emphasis in both programs is on development of the intellectual and technical skills necessary for independent research. The main component of both degrees is a thesis embodying the results of original research. Formal course requirements are few and are largely intended to fill gaps in the student's background.

Specialized Option Programs are available in the following areas:

- 1) NEO (Neotropical Environment)
- 2) Biomimetics
- 3) Biodiversity, Ecosystem Services and Sustainability Program (BESS) - visit website for more information

Research Facilities
The Stewart Biology Building and the Bellini Life Sciences Complex are well equipped for graduate training and research in a wide variety of areas of biology.

Their resources are greatly extended by affiliation with the Redpath Museum, the Groupe Interuniversitaire de Recherches Océanographiques du Québec (GROQ), the Biotechnology Research Institute of the National Research Council of Canada, the Montreal Neurological Institute, and the McGill University Health Centre (MUHC) affiliated hospitals.

Field research facilities include the Gault Nature Reserve at Mont St. Hilaire (Québec), the Morgan Arboretum (Québec), the Huntsman Marine Science Centre (New Brunswick), the Subarctic Research Laboratory (Québec), the Bellairs Research Institute (Barbados), the Smithsonian Tropical Research Institute (Panama), and the limnology research station at the Wilder and Helen Penfield Nature Reserve on Lake Memphremagog (Québec).

Graduate Programs

Research Areas
Research(2) Facilities

M.Sc. Program

Ph.D. Program

Supervision

Applications & Admissions

Deadlines

Fees & Student Support

Awards & Scholarships

Thesis Submission Info

Useful Links:

TA Positions

Forms

BCSA

> Biology Graduate Students Association

GPS Website

> McGill Graduate & Postdoctoral Studies Office

McGill Policies & Procedures

Graduate Studies Office

Department of Biology

1205 Doctor Penfield

Room W418

Montreal, Quebec

Canada H3A1B1

Room W418

Office Hours: 9 a.m. - 5 p.m.

Office Fax: (514) 398-1069

graduatebiologie@mcgill.ca

Graduate Admissions

Coordinator

(514) 398-3478

Graduate Studies - Department of Biology

M.Sc. PROGRAM

Graduate Programs

M.Sc. Program

Course Requirements

Other Requirements

Transfer to Ph.D. Program

>> Go to Forms

Ph.D. Program

Supervision

Admissions

Applications & Deadlines

Fees & Student Support

Awards & Scholarships

Thesis Submission Info

Useful Links:

TA Positions

Forms

BCSA

> Biology Graduate Students Association

GPS Website

> McGill Graduate & Postdoctoral Studies Office

McGill Policies & Procedures



Length of Program

McGill is the minimum time requirement to complete the Master's degree. The Biology Department offers a summer term so the residence requirement can be completed in one year, if required. The normal and expected duration is 2 years. In exceptional cases, 3 years may be required, but students are cautioned to avoid research projects that cannot be completed in 2 years.

Course Requirements

- Forty-five credits are required for the M.Sc. degree.
- Students must complete the course BIOL 697 in the first term, 698 in the second term and 699 in the third term (Master's Thesis Research 1, 2, 3). These research courses carry a credit weight of 13 credits each.
- M.Sc. students are required to take 6 additional course credits related to their field of study (language, writing and teaching courses are excluded):

- The student's supervisor MUST approve all course selections.
- These courses must be graduate level courses at the 500 or higher level.
- These courses may be taken in the Biology Department, other departments or at other Universities in Québec*.
- A graduate pass (65% or better) is mandatory for all required courses. Students who fail may be allowed to write a supplemental exam, but permission for this must be sought from the Graduate and Postdoctoral Studies Office.

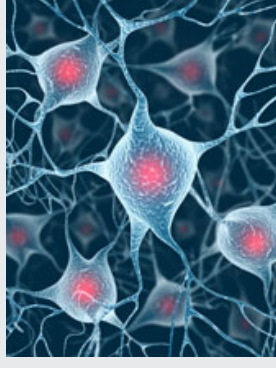
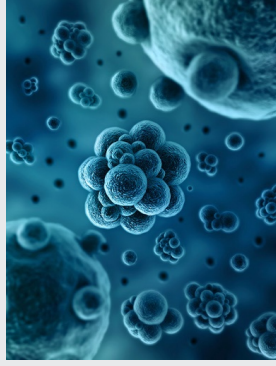
- The Supervisory Committee (SC) may require additional coursework if it considers such courses necessary for background knowledge or suitable training in biology.
- Students may take additional courses not required for degree purposes but they must maintain an overall average of 'B' (65%) or better. These additional courses may or may not be directly related to their field of study and can include writing, language and teaching courses.

* Courses taken at other universities in Québec must be taken through CREPUQ.

BIOLOGY DEPARTMENT SUBDIVISIONS

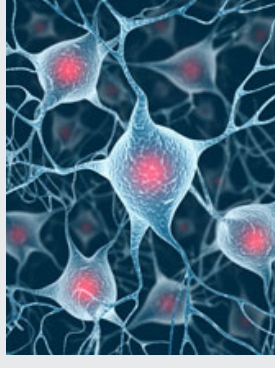
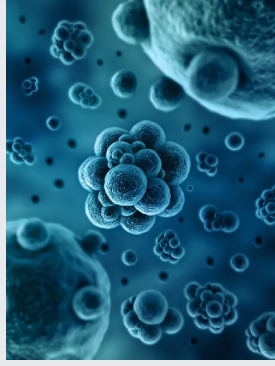
INTERNAL SEMINARS:

- Molecular
- Conservation, Ecology & Evolution
- Neurobiology
- Molecular WIPS
- EELs
- Neurobiology and behaviour seminars



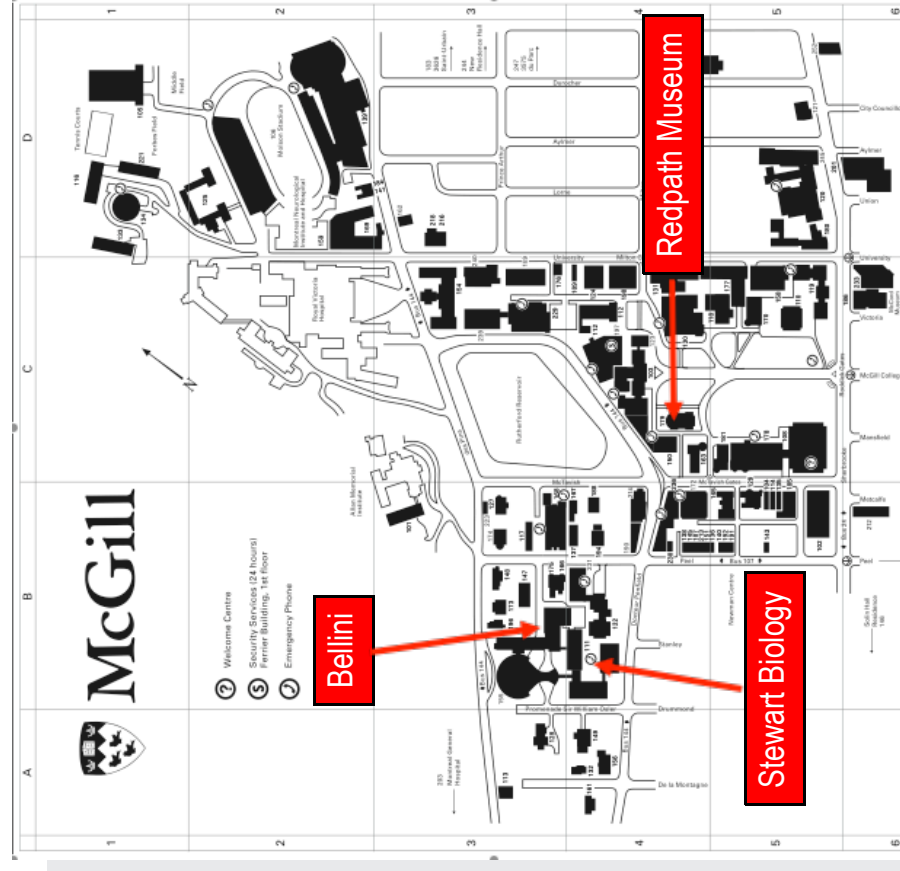
BIOLOGY DEPARTMENT SUBDIVISIONS

- Molecular
 - Conservation, Ecology & Evolution
 - Neurobiology
- EXTERNAL SEMINARS:
- Molecular Seminars
 - Stewart biology N2/2: Mondays @ 4:00pm
 - Organismal Seminars
 - Redpath Museum: Thursdays @ 3:00pm



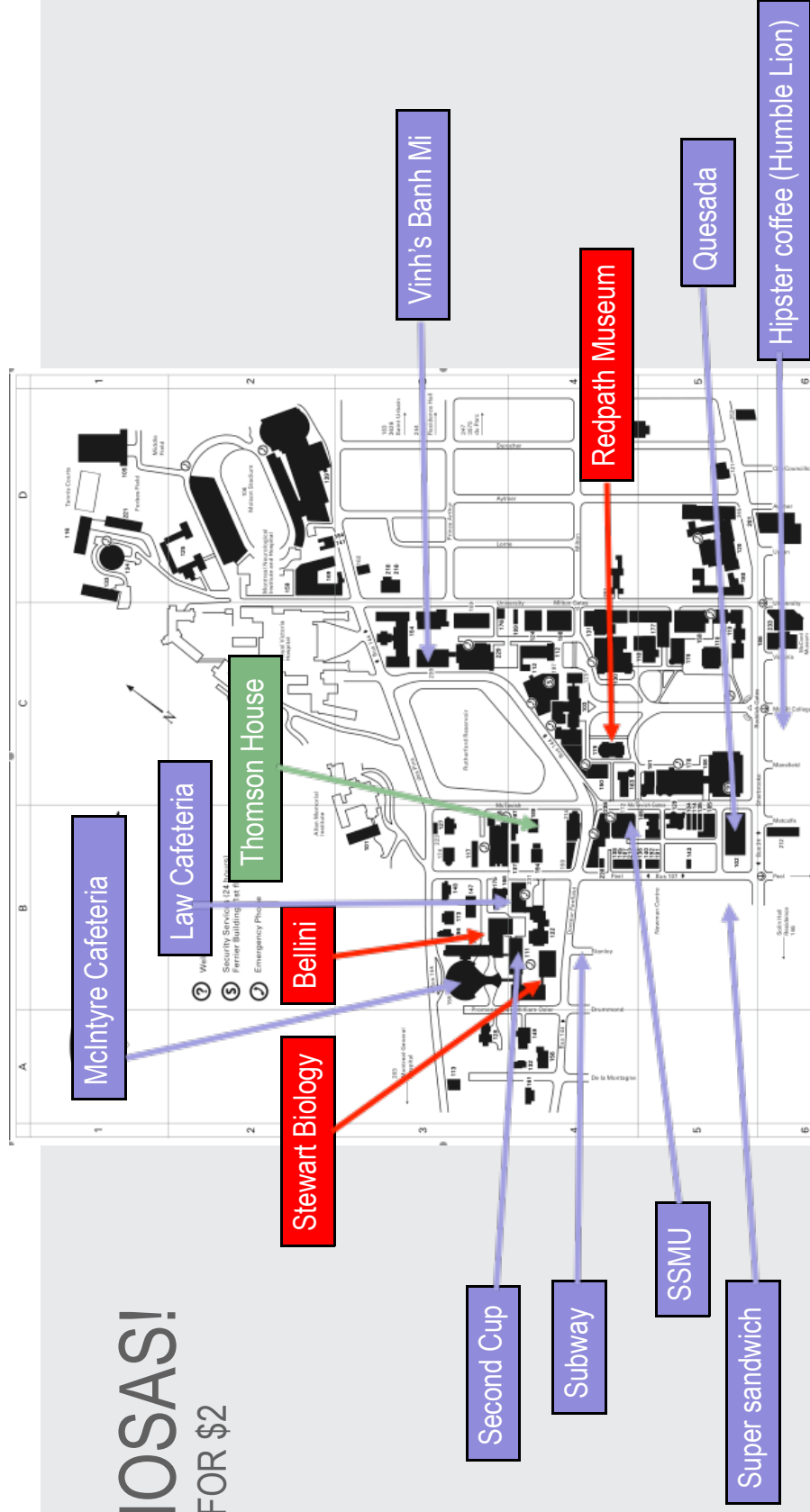
BIOLOGY DEPARTMENT BUILDINGS

For important building people and information on safety, keys, room access, and room bookings for each building, check out the BGSa website (<http://mcgillbgsa.com/>)



OTHER BUILDINGS

SAMOSAS!
3 FOR \$2



IMPOSTER SYNDROME

- This is a real thing
- Feeling like a “fake” or “fraud”
- Feeling like your success is due to luck
- Worried people will “find you out”

OTHER GRAD STUDENT THINGS

AVOID ISOLATION! SOCIAL LIFE:

- Monthly social events
- Camping trip (this weekend)
- Cabin trip (winter)
- BGSA weekly newsletter
- BGSajiji
- Intramurals
- Trivia night
- BGSA room: SB N2/5 (COFFEE HOUR)
- Get involved! Available positions



BGSA NEWSLETTER

- You've been added!
- BGSA Weekly
- BGSAjiji



LINKS

Biology department: <http://biology.mcgill.ca>

GPS: <http://www.mcgill.ca/gps/>

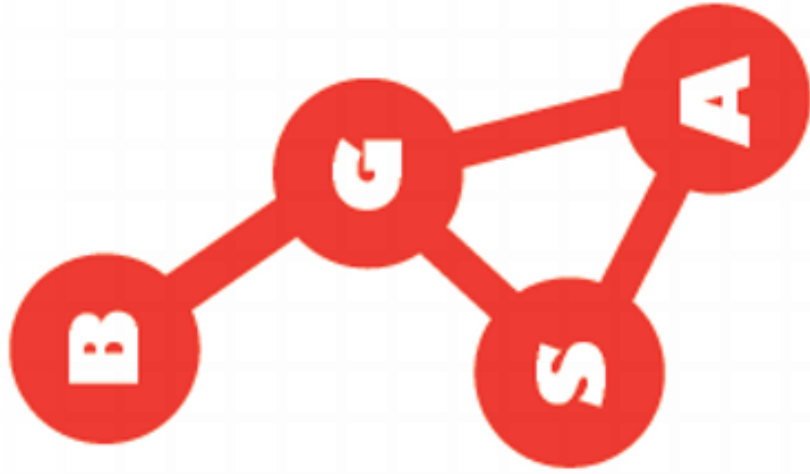
GPS Policies: <http://www.mcgill.ca/gps/policies/>

McGill Policies-Secretariat: <http://www.mcgill.ca/secretariat/policies/>

Supervisor-supervisee website: <http://www.mcgill.ca/gradsupervision/>

Environmental Health and Safety: <https://www.mcgill.ca/ehs/training>

THANKS!



BGSA Room: N2/5

mcgillbgsa.com

mcgillbgsa@gmail.com

Twitter: @McGillBGSA

Instagram: mcgillbgsa

Facebook: McGill BGSA